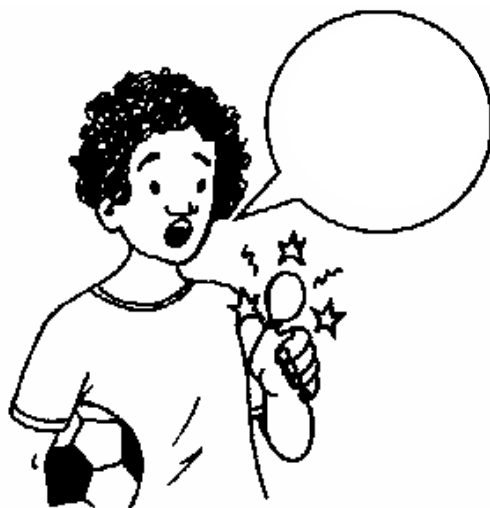


ficha de avaliação sumativa de língua portuguesa

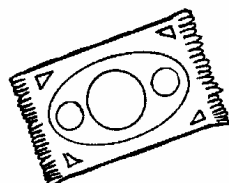
Data: _____ Avaliação: _____

Nome: _____

Completa os balões com o que os meninos dizem.



Liga os nomes aos desenhos



• pão •

• tapete •

• pé •

• popó •

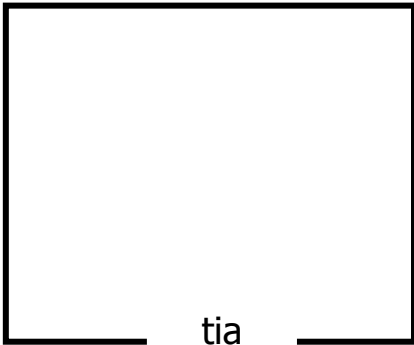
• pé

• pão

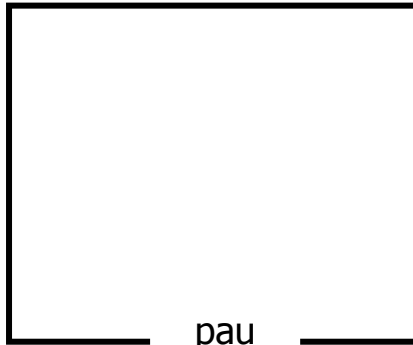
• popó

• tapete

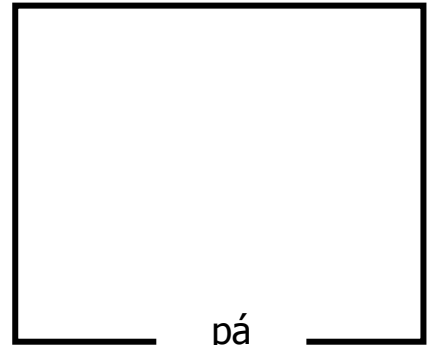
Ilustra



tia

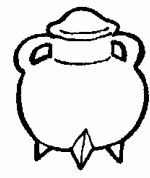
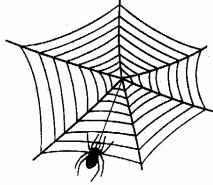


pau



pá

Legenda os desenhos



Pinta os balões de acordo com a chave.

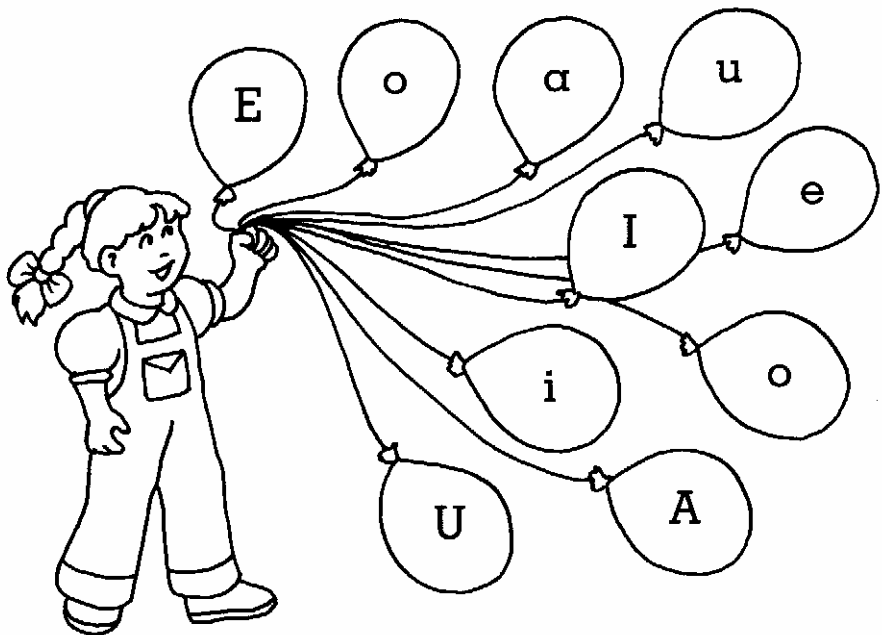
A - a → castanho

E - e → amarelo

I - i → lilás

O - o → vermelho

U - u → azul



Pinta os ditongos iguais da mesma cor

